

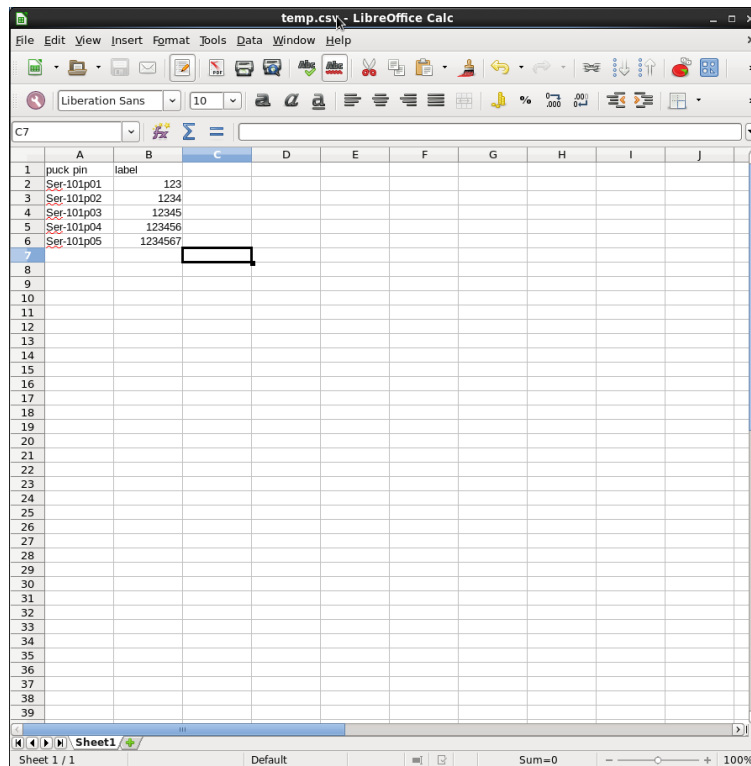
Sample Input File

Sample Info File

Sergui provides for the user to load in sample information. This information can be used to automatically update the naming convention for the collected data files. This can save a significant amount of time and prevent mistakes in file naming. Currently, all that is needed are 2 columns of information indicating the puck/pin (supported formats are defined in a later section) and sample label. The system expects the file to be a csv file with tab delimited fields. You can use any program to generate the file and then use the Open Office on the control computers to reformat the file.

Step 1. Put your file in your home directory on the control computer. The easiest way is to download it from a mail server. If you experience any problems, then you can mail it to your user support.

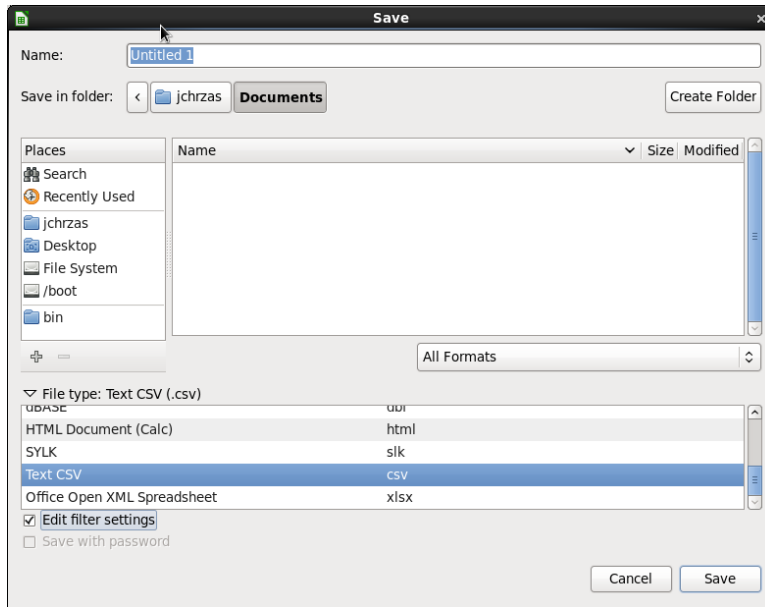
Step 2. Open program on the control computer: Applications/Office/LibreOffice Calc. Then open your file.



The screenshot shows the LibreOffice Calc application window titled 'temp.csv - LibreOffice Calc'. The spreadsheet contains the following data:

	A	B	C	D	E	F	G	H	I	J
1	puck pin	label								
2	Ser-101p01	123								
3	Ser-101p02	1234								
4	Ser-101p03	12345								
5	Ser-101p04	123456								
6	Ser-101p05	1234567								
7										
8										
9										
10										
11										
12										
13										
14										
15										
16										
17										
18										
19										
20										
21										
22										
23										
24										
25										
26										
27										
28										
29										
30										
31										
32										
33										
34										
35										
36										
37										
38										
39										

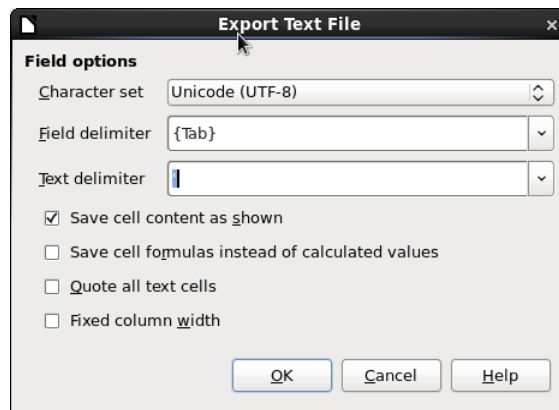
Step 3. Reformat your file by selecting File/Save As



Name your new file (always good idea to change the name to preserve original) and set the save path (your /home/directory is a good choice). Choose Text CSV as the file type and check the Edit filter setting box and then push save.



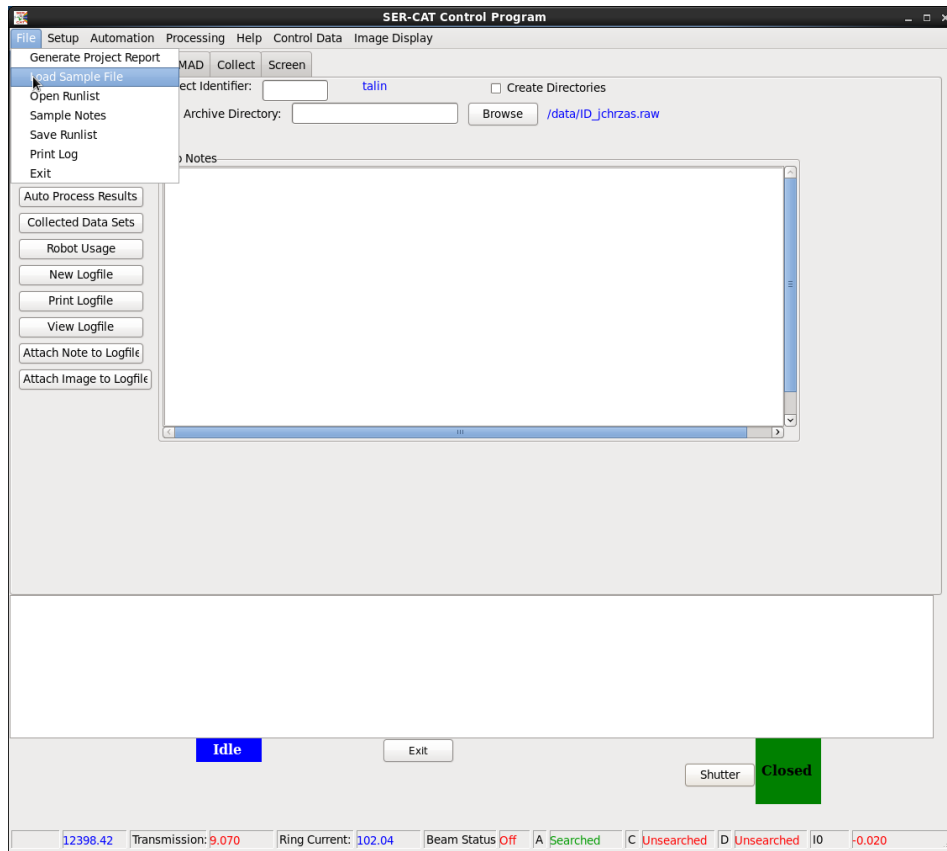
Push the Use Text CSV formatö button.

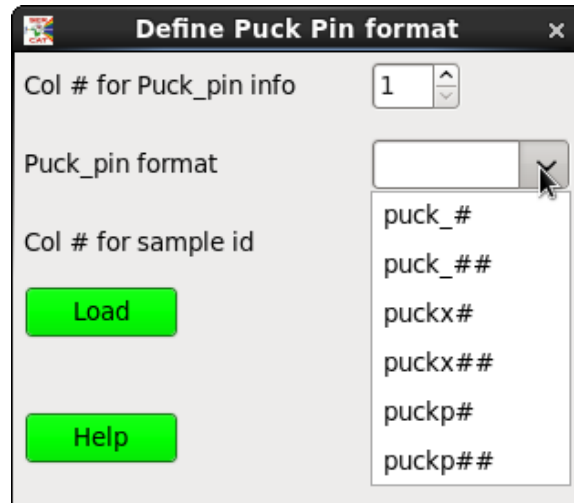


Select {Tab} for the Field delimiter and ÷ as the Text delimiter and push OK. You now have the correctly formatted file for Sergui.

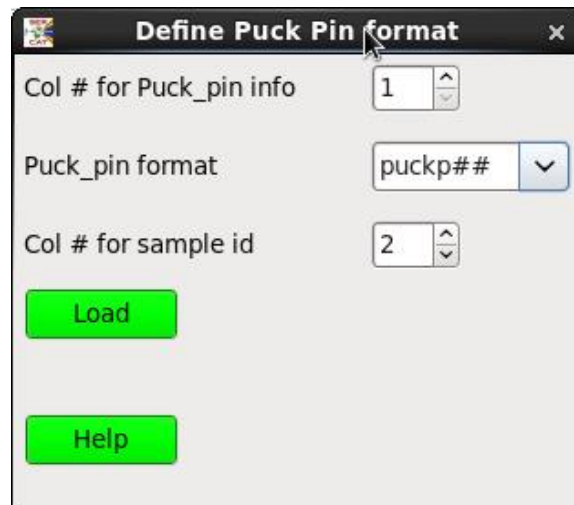
Step 4. Load the Sample Info File into Sergui.

After you start sergui and have created your /data/ID_User.raw directory, copy the reformatted (csv) file into this directory and load the file

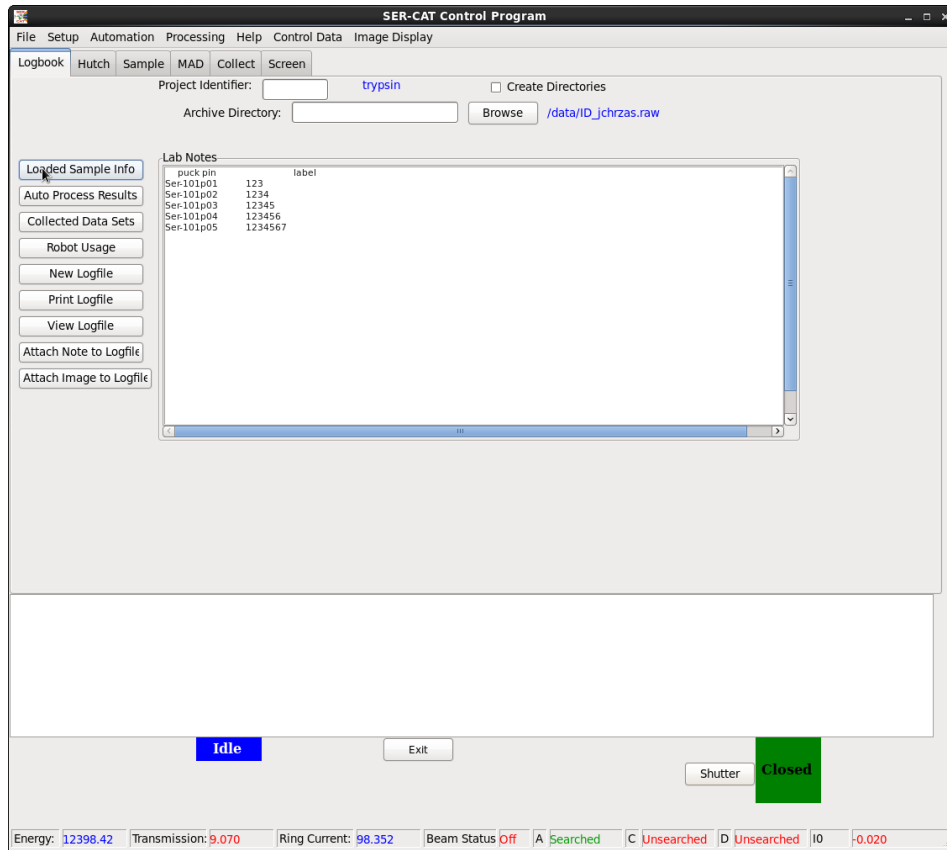




Choose the appropriate column number for your puck_pin, the puck_pin format and the sample id. You will have a few options for the puck pin format.



Where `puck` indicates the puck label and the rest indicated the format for the pin designation. In the above example, `Ser101p01`, the puck label would be `ser-101` and the pin formatting would be `p##`. Then push Load and select your *.csv file. Once the *.csv file is on your /data/ID_User.raw directory, you will be prompted to load this file when restarting Segui. If you want see what data has been loaded into Segui, you can change pages to the log page and select `Loaded Sample Info`.



Depending on how you formatted your original file, there may be extra data displayed in this log window, but it will not impact the usefulness of the good information.